

A1RS-A57M

QUARTUS ALPINE 2" - Square Adjustable Trimless



Fixture Type:

Catalog Number:

Project:

Location:

PRODUCT DESCRIPTION

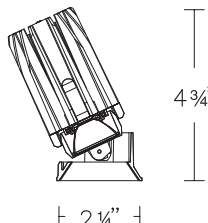
The QUARTUS ALPINE Recessed series offers high performance static white lighting that provide outputs up to 2000 lumens on 2" styles. The series features superlative glare control with 30° shielding, 35° vertical tilting with 360° horizontal rotation, and uniform floor-to-ceiling wall washing. A full line of round and square, trimmed and trimless luminaires deliver versatile lighting solutions for various applications. The recessed series includes easy serviceability of both the light engine and driver.

FEATURES

- Two-piece die-cast construction
- Light engine mounted on trim with springs for easy replacement
- 0-35° vertical tilting Center beam alignment retained throughout adjustment range
- Field changeable beam angle with reflectors provided
- Accepts one Lens or glare control accessory
- 8 year product warranty

SPECIFICATIONS

Construction:	Durable die-cast aluminum construction
Input	Universal 120-277V AC 50/60 Hz
Dimming:	Electronic Low Voltage (ELV): 100%-1% TRIAC: 100%-1% 0-10V: 100-1%
Light Source:	High output 3-step Mac Adam Ellipse COB Rated life of 50,000 hours at L70
Mounting:	Heavy gauge retention clips support trim firmly. Safety cabling standard. Ceiling cutout: Ø 3 1/2" Accommodates 1/2" - 1 1/4" ceiling thickness
Finish:	Electrostatically powder coated White, Black, Dark Bronze. Enamel coated Haze.
Standards:	ETL & cETL Wet Location Listed, Energy Star 2.0, Title 24 JA8 Compliant.

Model	Model	Beam	*Lumens	*CBCP	Color Temp	CRI	Finishes	Reflector/Trim
	A1RS-A57M Square Trimless	N 25°	1745	4490	27 2700K	90	BK DB HZ WT	Black Dark Bronze Haze White
		F 40°	1725	2920				
		W 55°	1740	2200				
		N 25°	1835	4725	30 3000K	90		
		F 40°	1820	3075				
		W 55°	1830	2315				

A1RS-A57M-__ __

Example: **A1RS-A57M-27BK** (Beam N-25° reflector is pre-installed. Beams F-40° and W-55° reflectors are included.)

*Lumens and CBCP are reference values for 3000K trim with **3** housing. Use multiplier table below to determine the output for other combinations.

MULTIPLIER		TRIM	
		27	30
HOUSING	3 (25W)	0.95	1.00
	2 (21W)	0.83	0.87
	1 (15W)	0.61	0.64

Example: **A1RS-A57M-27BK** N-25° beam in **1** housing: 1835 lm (Reference Output) x 0.64 (Multiplier) = 1175 lm
4725 CBCP (Reference Output) x 0.64 (Multiplier) = 3025 CBCP

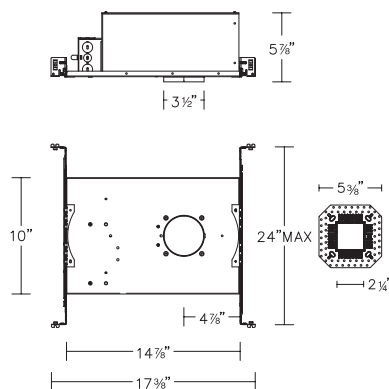
Please see next page for housing units (required)

A1RS-A57M

QUARTUS ALPINE 2" - Square Adjustable Trimless

HOUSING (Required)

New Construction IC Airtight



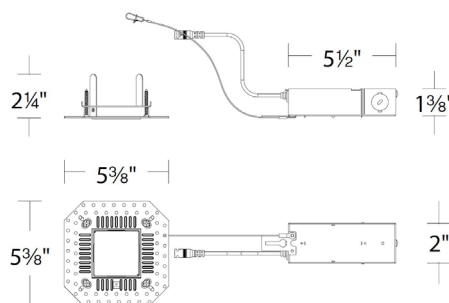
Model

A1RS-2571
A1RS-2572
A1RS-1573

Power

15W IC
21W IC
25W Non-IC

Remodel Non-IC



A1RS-3571
A1RS-3572
A1RS-3573

15W IC
21W IC
25W Non-IC

A1RS-___

Example: **A1RS-1573**

GLARE CONTROL ACCESSORIES

LENS-11-HCM	<i>Honeycomb Louver</i>
LENS-11P-CRL-BK	<i>Cross Louver</i>

LENS ACCESSORIES

LENS-11	AMB RED BLU GRN SPR BEL	<i>Amber</i> <i>Red</i> <i>Blue</i> <i>Green</i> <i>Spread</i> <i>Beam Elongating</i>
----------------	----------------------------------------------------------------------------------	------------------------------------------------------------------------------------------------------