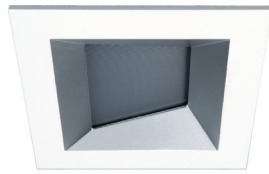
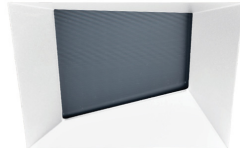
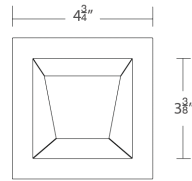


# ALPINE RPS 3.5" Wall Wash Trim/Trimless

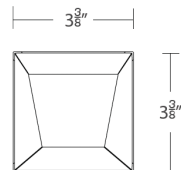
A1RE-W56, A1RE-W57



Trim



Trimless



Fixture Type:

Catalog Number:

Project:

Location:

## FINISHES



Trim	Housing Type	Forward Voltage	Maximum Drive Current	Power	Max # of Fixtures	Beam	Color Temp		Lumens	CBCP	Finish
A1RE-W56 Square Trim Wall Wash	A2RE	36VDC	300mA	10W	1 per Channel	Asymmetrical	927 930	2700K 3000K	590 635	N/A N/A	HZWT Haze/White White
	A3RE	18VDC	450mA	7.5W	2 per Channel	Asymmetrical	927 930	2700K 3000K	445 475	N/A N/A	
A1RE-W57 Square Trimless Wall Wash	A2RE	36VDC	300mA	10W	1 per Channel	Asymmetrical	927 930	2700K 3000K	590 635	N/A N/A	HZ Haze White
	A3RE	18VDC	450mA	7.5W	2 per Channel	Asymmetrical	927 930	2700K 3000K	445 475	N/A N/A	

Example: A1RE-W56-WT

## DESCRIPTION

ALPINE RPS offers performance features in a simple but versatile package for residential and commercial applications alike. One housing can be used for downlight, adjustable, pinhole, wall wash.

## FEATURES

- AISPIRE remote power supply (RPS) required, sold separately
- 3 beam angle options included:  
Narrow flood beam film pre-installed, interchangeable flood beam film supplied, remove film for spot beam.
- IC-Rated and Airtight when used with new construction housings.
- Non IC-Rated and Airtight when used with remodel housings.
- Adjustable LED light engine included with housing:  
Vertical adjustment 0-30°, Horizontal Adjustment 360°
- Shallow housing under 4" depth
- 5 year warranty

## SPECIFICATIONS

<b>Construction:</b>	Die-cast aluminum trim and heat sink.
<b>Input Power:</b>	Class 2 low voltage, DC power. See fixture configuration table above.
<b>Remote Power Supplies (RPS):</b>	A2D20-BK, A2D40-BK. Reference compatible RPS specifications for further requirements.
<b>Dimming:</b>	Refer to RPS specifications for protocol and compatibility.
<b>Light Source:</b>	High output 3 Step MacAdam Ellipse LEDs, 90+ CRI Rated life of 50,000 hours.
<b>Mounting:</b>	Retention clips firmly hold trim to housing.
<b>Finish:</b>	Powder coated white, enamel-coated haze.
<b>Ceiling Thickness:</b>	1/2" - 1"
<b>Standards:</b>	UL & cUL, Wet location listed.
<b>Operating Temp:</b>	-4°F to 104°F (-20°C to 40°C)

aispire.com  
Phone (800) 526.2588  
Fax (800) 526.2585

Headquarters/Eastern Distribution Center  
44 Harbor Park Drive  
Port Washington, NY 11050

Central Distribution Center  
1600 Distribution Ct  
Lithia Springs, GA 30122

Western Distribution Center  
1750 Archibald Avenue  
Ontario, CA 91760

# ALPINE RPS 3.5" Wall Wash Trim/Trimless

A1RE-W56, A1RE-W57



Housing (Required) - Order separately from trims

	Model	Voltage	Power	Color Temp
<p><i>New Construction (Trim/Trimless)</i></p> <p>Cut out: 4 1/4" x 4 1/4"</p>	<b>A2RE-258M</b> <i>IC-Rated Airtight</i>	36VDC	10W	<b>27</b> 2700K <b>30</b> 3000K
	<b>A3RE-258M</b> <i>IC-Rated Airtight</i>	18VDC	7.5W	<b>27</b> 2700K <b>30</b> 3000K
<p><i>Remodel Trim</i></p> <p>Cut out: 3 7/8" x 3 7/8"</p>	<b>A2RE-356M</b> <i>Non IC-Rated Airtight</i>	36VDC	10W	<b>27</b> 2700K <b>30</b> 3000K
	<b>A3RE-356M</b> <i>Non IC-Rated Airtight</i>	18VDC	7.5W	<b>27</b> 2700K <b>30</b> 3000K
<p><i>Remodel Trimless</i></p> <p>Cut out: 3 7/8" x 3 7/8"</p>	<b>A2RE-357M</b> <i>Non IC-Rated Airtight</i>	36VDC	10W	<b>27</b> 2700K <b>30</b> 3000K
	<b>A3RE-357M</b> <i>Non IC-Rated Airtight</i>	18VDC	7.5W	<b>27</b> 2700K <b>30</b> 3000K

Example: A2RE-258M-30

## FEATURES

- Adjustable LED light engine included with housing:
- Vertical Adjustment 0-30°, Horizontal Adjustment 360°
- Trim or trimless with die-cast spackle frame included.
- Accepts one optional honeycomb louver or optical lens.

GLARE CONTROL ACCESSORIES sold separately

LENS-16	HCL	Honeycomb Louver
---------	-----	------------------

LENS ACCESSORIES SOLD SEPARATELY

LENS-16	AMB	Amber
	RED	Red
	FR	Frosted
	SPR	Spread
	BEL	Beam Elongating

aispire.com  
Phone (800) 526.2588  
Fax (800) 526.2585

Headquarters/Eastern Distribution Center  
44 Harbor Park Drive  
Port Washington, NY 11050

Central Distribution Center  
1600 Distribution Ct  
Lithia Springs, GA 30122

Western Distribution Center  
1750 Archibald Avenue  
Ontario, CA 91760

# AiSPiRE® Remote Power Supply (RPS)

## A2D LED DMX Power Unit



Model	# of channels	Finish
A2D20 2 x 75W Class 2 output DMX LED power unit	4	BK Black
A2D40 4 x 75W Class 2 output DMX LED power unit	8	BK Black

Example: A2D20-BK

### FINISHES



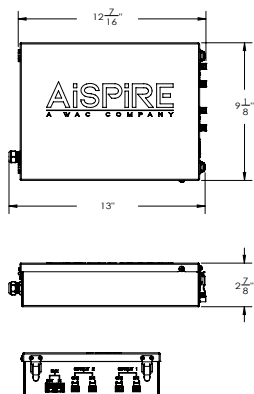
Black

### FEATURES

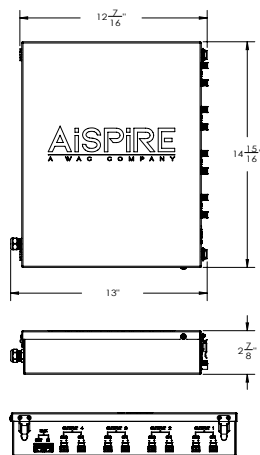
- 75W Max. Output Power (Per DMX Power Unit)
- 250mA-1500mA output current selection
- Class 2 power supply
- Built-in DMX512 interface
- IP20 rating
- UL Damp location listed

### LINE DRAWING

A2D20 - 4 Channel



A2D40- 8 Channel



### INPUT

Voltage Range:	120VAC
Frequency Range:	50/60Hz
Power Factor:	0.99 @100VAC
THD:	<15% @full load
Current:	0.9A @100VAC
Standby Power Consumption:	<0.5w

### OUTPUT

LED Channels:	APD20-BK: 4 Channels APD40-BK: 8 Channels
Selectable Current:	250mA, 300mA, 350mA, 400mA, 450mA, 500mA, 600mA, 700mA, 800mA, 900mA, 1A, 1.1A, 1.2A, 1.3A, 1.4A, 1.5A
DC Voltage Range:	6-48VDC
Current Tolerance:	± 3%
Rated Power:	72W per channel 75W max (per 2-channel output)

### CONTROL

Control Protocol:	DMX 512-A, DMX 512
Dimming Range:	0%-100%
Control Input:	DMX RJ45
Dimming Curve:	Linear/Logarithm (Selectable)

### PROTECTION

Short Circuit, Over Voltage, Over Temp:	Recovers automatically after fault condition is removed
---	---

### ENVIRONMENT

Ambient Operating Temp:	-4°F - 113°C (-20°F - 45°C)
-------------------------	-----------------------------

### SAFETY & EMC

- Safety Standard: UL, Damp Location
- EMC Emission: FCC Part 15 Class B
- Surge Immunity: Line-Line 1 kV

aispire.com  
Phone (800) 526.2588  
Fax (800) 526.2585

Headquarters/Eastern Distribution Center  
44 Harbor Park Drive  
Port Washington, NY 11050

Central Distribution Center  
1600 Distribution Ct  
Lithia Springs, GA 30122

Western Distribution Center  
1750 Archibald Avenue  
Ontario, CA 91760