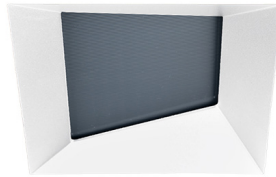
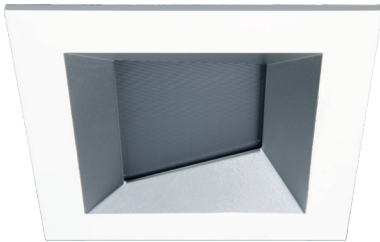


ALPINE

A1RE-W56, A1RE-W57 3.5" Wall Wash



Fixture Type:

Catalog Number:

Project:

Location:

FINISHES



White



Haze/White



Haze

	Model	Beam	Color Temp	Lumens	CBCP	Finish
	A1RE-W56 (Square Trim Wall Wash)	Asymmetrical	27 2700K 30 3000K	615 660	N/A	WT White HZWT Haze/White
	A1RE-W57 (Square Trimless Wall Wash)	Asymmetrical	27 2700K 30 3000K	615 660	N/A	WT White HZ Haze

Example: **A1RE-W56-WT**

DESCRIPTION

Alpine offers performance features in a simple but versatile package for residential and commercial applications alike. One housing can be used for downlight, adjustable, pinhole, wall wash trims.

FEATURES

- 3 beam angle options included: For Wall Wash trim optimal optics is light engine with no film installed. Non IC and IC-Rated,
- IC-Rated, Airtight, New Construction,
- Adjustable LED light engine included with housing
- Shallow housing under 4" depth
- 5 year warranty

SPECIFICATIONS

Construction:	Die-cast aluminum trim and heat sink
Power:	13.5W
Input:	120V-277V 50/60Hz
Dimming:	100% - 1% TRIAC, ELV 100% - 5%, 0-10V
Light Source:	High output COB LED rated life of 50,000 hours.
Mounting:	Retention clips firmly hold trim to housing. Cut Out: 4 1/4" x 4 1/4" New Construction Housing 3 7/8" x 3 7/8" Remodel Housing
Finish:	Powder coated
Ceiling Thickness:	1/2" - 1"
Operating Temp:	-4°F to 104°F (-20°C to 40°C)
Standards:	UL & cUL, Wet location listed. Title 24 JA8-2019 Compliant

Alpine

A1RE-W56, A1RE-W57 3.5" Wall Wash



Model	Model	Power	Color Temp
	A1RE-258M IC-Rated Airtight	13.5W	27 2700K 30 3000K
	A1RE-356M Non IC Airtight	13.5W	27 2700K 30 3000K
	A1RE-357M Non IC Airtight	13.5W	27 2700K 30 3000K

Example: **A1RE-258M-27**

FEATURES

- Adjustable LED light engine included with housing: Optimal Vertical Adjustment for Wall Wash is 15° indexed position
- Trim or trimless with die-cast spackle frame included.
- Accepts one optional honeycomb louver or optical lens.

GLARE CONTROL ACCESSORIES sold separately

LENS-16	HCL Honeycomb Louver
----------------	-----------------------------

LENS ACCESSORIES sold separately

LENS-16	AMB Amber RED Red FR Frosted SPR Spread BEL Beam Elongating
----------------	--

aispire.com
Phone (800) 526.2588
Fax (800) 526.2585

Headquarters/Eastern Distribution Center
44 Harbor Park Drive
Port Washington, NY 11050

Central Distribution Center
1600 Distribution Ct
Lithia Springs, GA 30122

Western Distribution Center
1750 Archibald Avenue
Ontario, CA 91760