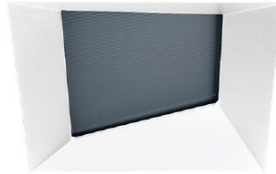
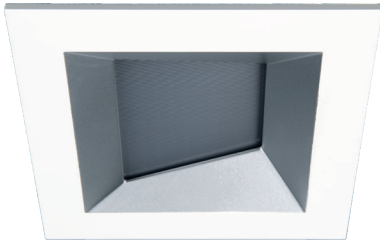


ASTRO 3.5 Dim-To-Warm Wall Wash

A1RE-W56-DW, A1RE-W57-DW



Fixture Type:

Catalog Number:

Project:

Location:

FINISHES



White



Haze White



Haze

Model	Power	Beam	Color Temp	Max Lumens	Max CBCP	Finish
A1RE-W56-DW Square Trim Wall Wash Downlight	13W	Asym	3000K-1800K	610	N/A	WT White HZWT Haze White
	16W	Asym	3000K-1800K	720	N/A	WT White HZWT Haze White
A1RE-W57-DW Square Trimless Wall Wash Downlight	13W	Asym	3000K-1800K	610	N/A	WT White HZ Haze
	16W	Asym	3000K-1800K	720	N/A	WT White HZ Haze

Example: **A1RE-W57-DW-WT**

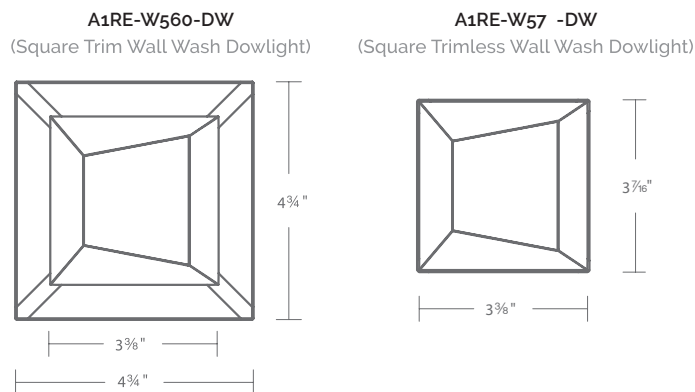
DESCRIPTION

The brilliant LED recessed downlight that gradually changes to a warmer color temperature as you dim. Great for new construction projects or remodels.

FEATURES

- 2 beam angle options included - Narrow flood beam pre-installed, interchangeable flood beam film supplied
- Non IC and IC-Rated, Airtight, New Construction, Remodel
- Adjustable LED light engine included with housing: Wall Wash Vertical Adjustment to 15°
- Shallow housing under 4" depth
- 5 year warranty

LINE DRAWING



SPECIFICATIONS

Construction:	Die-cast aluminum trim and heat sink
Power:	13W/16W
Input:	120V-277V 50/60Hz
Dimming:	100% - 1% TRIAC, ELV 100% - 5%, 0-10V
Light Source:	CRI 95 high output COB LED rated life of 50,000 hours
Mounting:	Retention clips firmly hold trim to housing. Cutout: 4 1/4" x 4 1/4" New Construction Housing 3 7/8" x 3 7/8" Remodel Housing
Finish:	Powder coated white, haze.
Ceiling Thickness:	1/2" - 1"
Operating Temp:	-4°F to 104°F (-20°C to 40°C)
Standards:	UL, cUL, Wet Location Listed, Title 24 JA8-2019 Compliant, IC, Airtight

ASTRO 3.5 Dim-To-Warm Wall Wash

A1RE-W56-DW, A1RE-W57-DW



Model	Model	Power	Color Temp
	A1RE-258M IC-Rated Airtight A1RE-158M Non IC- Rated Airtight	13W 16W	 DW 3000K-1800K
	A1RE-356M Non IC- Rated Airtight	16W	DW 3000K-1800K
	A1RE-357M Non IC- Rated Airtight	16W	DW 3000K-1800K

Example: **A1RE-356M-DW**



FEATURES

- Dim to warm technology
- Line voltage direct to the housing with "Intuitive style" dimming that replicates halogen and incandescent warmth
- High lumen density for directional lighting
- Compatible with most single channel drivers and dimmer switches
- Up to 97CRI (typical) at 3000K dimming down to 1800K for residential and hospitality lighting
- Consistent white light <3 SDCM

APPLICATIONS

- Hospitality, hotel, and restaurant lighting
- Bedrooms, bathrooms, theaters, great rooms, and lower levels
- Retail shop lighting
- Public, commercial buildings

CCT CHANGE DIMMING CURVE

