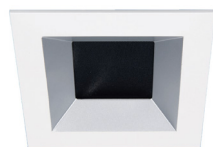
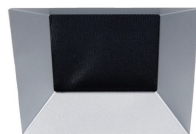
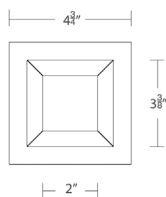


ALPINE RPS 3.5" Adjustable Downlight Trim/Trimless

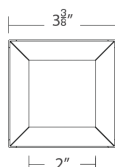
A1RE-D56, A1RE-D57



Trim



Trimless



Fixture Type:

Catalog Number:

Project:

Location:

FINISHES



Trim	Housing Type	Forward Voltage	Maximum Drive Current	Power	Max # of Fixtures	Beam	Color Temp	Lumens	CBCP	Finish
A1RE-D56 Square Trim Downlight & Adjustable	A2RE	36VDC	300mA	10W	1 per Channel	Spot 16°	927 2700K 930 3000K	855 4989 920 5364	HZWT	Haze/White White
						Narrow Flood 36°	927 2700K 930 3000K	840 1463 905 1574		
						Flood 51°	927 2700K 930 3000K	805 839 865 902		
	A3RE	18VDC	450mA	7.5W	2 per Channel	Spot 16°	927 2700K 930 3000K	640 3740 690 4023		
						Narrow Flood 36°	927 2700K 930 3000K	630 1097 680 1181		
						Flood 51°	927 2700K 930 3000K	605 629 650 677		
A1RE-D57 Square Trimless Downlight & Adjustable	A2RE	36VDC	300mA	10W	1 per Channel	Spot 16°	927 2700K 930 3000K	855 4989 920 5364	HZ	Haze White
						Narrow Flood 36°	927 2700K 930 3000K	840 1463 905 1574		
						Flood 51°	927 2700K 930 3000K	805 839 865 902		
	A3RE	18VDC	450mA	7.5W	2 per Channel	Spot 16°	927 2700K 930 3000K	640 3740 690 4025		
						Narrow Flood 36°	927 2700K 930 3000K	630 1097 680 1180		
						Flood 51°	927 2700K 930 3000K	605 629 650 676		

Example: A1RE-D56-WT

DESCRIPTION

ALPINE RPS offers performance features in a simple but versatile package for residential and commercial applications alike. One housing can be used for downlight, adjustable, pinhole, wall wash.

FEATURES

- AISPIRE remote power supply (RPS) required, sold separately
- 3 beam angle options included:
Narrow flood beam film pre-installed, interchangeable flood beam film supplied, remove film for spot beam.
- IC-Rated and Airtight when used with new construction housings.
- Non IC-Rated and Airtight when used with remodel housings.
- Adjustable LED light engine included with housing:
Vertical adjustment 0-30°, Horizontal Adjustment 360°
- Shallow housing under 4" depth
- 5 year warranty

SPECIFICATIONS

Construction:	Die-cast aluminum trim and heat sink
Input Power:	Class 2 low voltage, DC power See fixture configuration table above
Remote Power Supplies (RPS):	A2D20-BK, A2D40-BK. Reference compatible RPS specifications for further requirements
Dimming:	Refer to RPS specifications for protocol and compatibility
Light Source:	High output 3 Step MacAdam Ellipse LEDs, 90+ CRI Rated life of 50,000 hours.
Mounting:	Retention clips firmly hold trim to housing
Finish:	Powder coated white, enamel-coated haze
Ceiling Thickness:	1/2" - 1"
Standards:	UL & cUL, Wet location listed.
Operating Temp:	-4°F to 104°F (-20°C to 40°C)

aispire.com
Phone (800) 526.2588
Fax (800) 526.2585

Headquarters/Eastern Distribution Center
44 Harbor Park Drive
Port Washington, NY 11050

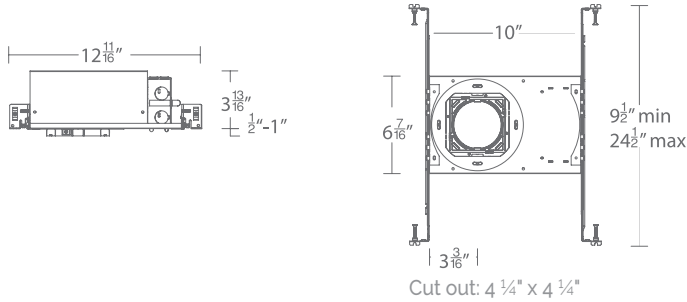
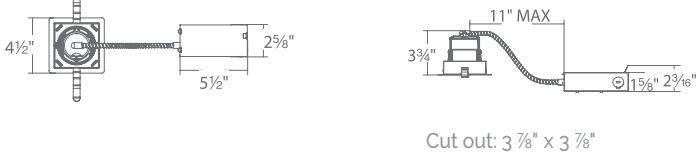
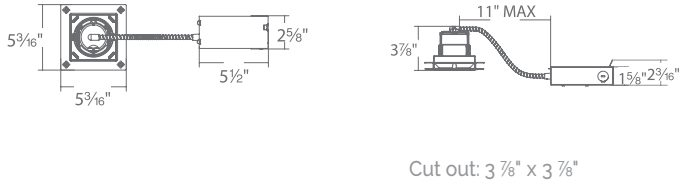
Central Distribution Center
1600 Distribution Ct
Lithia Springs, GA 30122

Western Distribution Center
1750 Archibald Avenue
Ontario, CA 91760

ALPINE RPS 3.5" Adjustable Downlight Trim/Trimless
A1RE-D56, A1RE-D57



Housing (Required) - Order separately from trims

	Model	Voltage	Power	Color Temp
<p>New Construction (Trim/Trimless)</p> 	A2RE-258M IC-Rated Airtight	36VDC	10W	27 2700K 30 3000K
	A3RE-258M IC-Rated Airtight	18VDC	7.5W	27 2700K 30 3000K
<p>Remodel Trim</p> 	A2RE-356M Non IC-Rated Airtight	36VDC	10W	27 2700K 30 3000K
	A3RE-356M Non IC-Rated Airtight	18VDC	7.5W	27 2700K 30 3000K
<p>Remodel Trimless</p> 	A2RE-357M Non IC-Rated Airtight	36VDC	10W	27 2700K 30 3000K
	A3RE-357M Non IC-Rated Airtight	18VDC	7.5W	27 2700K 30 3000K

Example: A2RE-258M-30

FEATURES

- Adjustable LED light engine included with housing:
- Vertical Adjustment 0-30°, Horizontal Adjustment 360°
- Trim or trimless with die-cast spackle frame included.
- Accepts one optional honeycomb louver or optical lens.

GLARE CONTROL ACCESSORIES sold separately

LENS-16	HCL	Honeycomb Louver
---------	-----	------------------

LENS ACCESSORIES SOLD SEPARATELY

LENS-16	AMB	Amber
	RED	Red
	FR	Frosted
	SPR	Spread
	BEL	Beam Elongating

AiSPIRE® Remote Power Supply (RPS)

A2D LED DMX Power Unit



INPUT

Voltage Range:	120VAC
Frequency Range:	50/60Hz
Power Factor:	0.99 @100VAC
THD:	<15% @full load
Current:	0.9A @100VAC
Standby Power Consumption:	<0.5w

OUTPUT

LED Channels:	APD20-BK: 4 Channels APD40-BK: 8 Channels
Selectable Current:	250mA, 300mA, 350mA, 400mA, 450mA, 500mA, 600mA, 700mA, 800mA, 900mA, 1A, 1.1A, 1.2A, 1.3A, 1.4A, 1.5A
DC Voltage Range:	6-48VDC
Current Tolerance:	± 3%
Rated Power:	72W per channel 75W max (per 2-channel output)

CONTROL

Control Protocol:	DMX 512-A, DMX 512
Dimming Range:	0%-100%
Control Input:	DMX RJ45
Dimming Curve:	Linear/Logarithm (Selectable)

PROTECTION

Short Circuit, Over Voltage, Over Temp:	Recovers automatically after fault condition is removed
--	---

ENVIRONMENT

Ambient Operating Temp:	-4°F - 113°C (-20°F - 45°C)
--------------------------------	-----------------------------

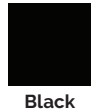
SAFETY & EMC

- Safety Standard: UL, Damp Location
- EMC Emission: FCC Part 15 Class B
- Surge Immunity: Line-Line 1 kV

Model	# of channels	Finish
A2D20 2 x 75W Class 2 output DMX LED power unit	4	BK Black
A2D40 4 x 75W Class 2 output DMX LED power unit	8	

Example: A2D20-BK

FINISHES

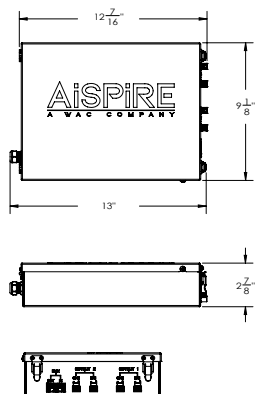


FEATURES

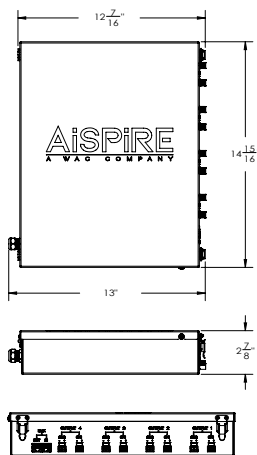
- 75W Max. Output Power (Per DMX Power Unit)
- 250mA-1500mA output current selection
- Class 2 power supply
- Built-in DMX512 interface
- IP20 rating
- UL Damp location listed

LINE DRAWING

A2D20 - 4 Channel



A2D40- 8 Channel



aispire.com
Phone (800) 526.2588
Fax (800) 526.2585

Headquarters/Eastern Distribution Center
44 Harbor Park Drive
Port Washington, NY 11050

Central Distribution Center
1600 Distribution Ct
Lithia Springs, GA 30122

Western Distribution Center
1750 Archibald Avenue
Ontario, CA 91760