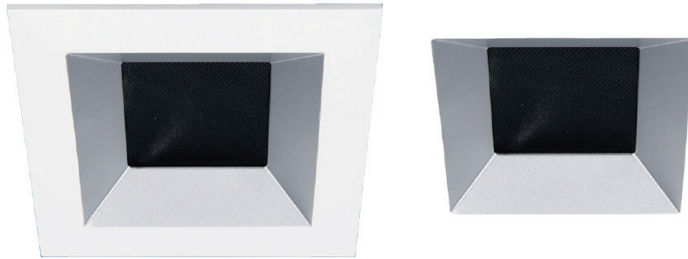


# ASTRO 3.5" Adjustable Downlight

## A1RE-D56-DW, A1RE-D57-DW



Fixture Type:

Catalog Number:

Project:

Location:

### FINISHES



| Model   | Power | Beam                          | Color Temp  | Max Lumens  | Max CBCP    | Finish                      |
|---|-------|-------------------------------|-------------|-------------|-------------|-----------------------------|
| A1RE-D56-DW<br>Square Trim<br>Adjustable Downlight      | 13W   | Narrow Flood 34°<br>Flood 60° | 3000K-1800K | 865<br>790  | 2165<br>665 | WT White<br>HZWT Haze White |
|   | 16W   | Narrow Flood 34°<br>Flood 60° | 3000K-1800K | 1025<br>930 | 2565<br>790 | WT White<br>HZWT Haze White |
| A1RE-D57 -DW<br>Square Trimless<br>Adjustable Downlight | 13W   | Narrow Flood 34°<br>Flood 60° | 3000K-1800K | 865<br>790  | 2165<br>665 | WT White<br>HZ Haze         |
|   | 16W   | Narrow Flood 34°<br>Flood 60° | 3000K-1800K | 1025<br>930 | 2565<br>790 | WT White<br>HZ Haze         |

Example: A1RE-D56-DW-WT

### DESCRIPTION

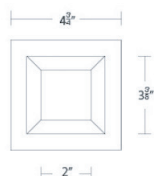
The brilliant LED recessed downlight that gradually changes to a warmer color temperature as you dim. Great for new construction projects or remodels.

### FEATURES

- 2 beam angle options included - Narrow flood beam pre-installed, interchangeable flood beam film supplied
- Non IC and IC-Rated, Airtight, New Construction, Remodel
- Adjustable LED light engine included with housing: Vertical Adjustment 0-30°, Horizontal Adjustment 360°
- Shallow housing under 4" depth
- 5 year warranty

### LINE DRAWING

A1RE-D56-DW  
Square Trim  
Adjustable Downlight



A1RE-D57-DW  
Square Trimless  
Adjustable Downlight



### SPECIFICATIONS

|                           |   |
|---------------------------|---|
| <b>Construction:</b>      | Die-cast aluminum trim and heat sink                          |
| <b>Power:</b>             | 13W/16W   |
| <b>Input:</b>             | 120V-277V 50/60Hz   |
| <b>Dimming:</b>           | 100% - 1% TRIAC, ELV<br>100% - 5%, 0-10V                      |
| <b>Light Source:</b>      | CRI 95 high output COB LED rated life of 50,000 hours         |
| <b>Mounting:</b>          | Retention clips firmly hold trim to housing.<br>Cutout 4 1/4" |
| <b>Finish:</b>            | Powder coated white, haze.                                    |
| <b>Ceiling Thickness:</b> | 1/2" - 1"   |
| <b>Operating Temp:</b>    | -4°F to 104°F (-20°C to 40°C)                                 |
| <b>Standards:</b>         | UL & cUL, Wet Location listed, Title 24 JA8-2019 Compliant    |

# Astro 3.5" Adjustable Downlight

## A1RE-D56-DW, A1RE-D57-DW



| Model | Model                                      | Power |    | Color Temp  |
|-------|--|-------|----|-------------|
|       | <b>A1RE-258M</b><br>IC-Rated Airtight      | 13W   |    |             |
|       | <b>A1RE-158M</b><br>Non IC- Rated Airtight | 16W   | DW | 3000K-1800K |
|       | <b>A1RE-356M</b><br>Non IC- Rated Airtight | 16W   | DW | 3000K-1800K |
|       | <b>A1RE-357M</b><br>Non IC- Rated Airtight | 16W   | DW | 3000K-1800K |

Example: **A1RE-258M-DW**



## FEATURES

- Dim to warm technology
- Line voltage direct to the housing with "Intuitive style" dimming that replicates halogen and incandescent warmth
- High lumen density for directional lighting
- Compatible with most single channel drivers and dimmer switches
- Up to 97CRI (typical) at 3000K dimming down to 1800K for residential and hospitality lighting
- Consistent white light <3 SDCM

## APPLICATIONS

- Hospitality, hotel, and restaurant lighting
- Bedrooms, bathrooms, theaters, great rooms, and lower levels
- Retail shop lighting
- Public, commercial buildings

## CCT CHANGE DIMMING CURVE

